

WHAT OUR STAFF SAY



OVERVIEW



Employee Survey conducted in 2017



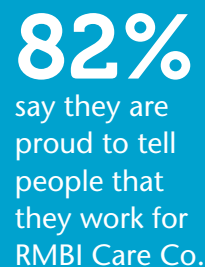
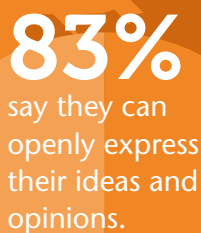
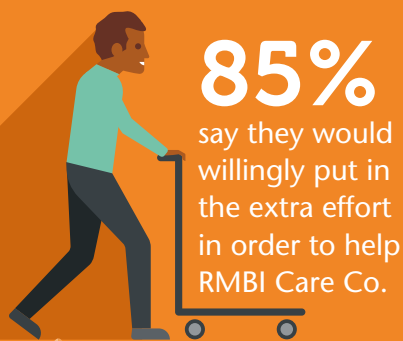
815 staff members responded to the survey



83% of employees surveyed are engaged

KEY RESULTS

Kind Supportive Trusted



EMPLOYEE BENEFITS

- Competitive rate of pay benchmarked against the industry
- Staff Wellbeing Scheme
- Comprehensive staff training
- Career progression opportunities

- Employee Assistance Programme, inc. Health Plan and Staff Discounts
- Pension scheme
- Competitive holiday entitlement
- Employee recognition scheme

The Royal Masonic Benevolent Institution Care Company 60 Great Queen Street, London, WC2B 5AZ • Tel 020 7596 2400 • Email enquiries@rmbi.org.uk • Fax 020 7596 2427
Registered Charity No: 1163245 • Company No: 1293566 • This company is part of the Masonic Charitable Foundation – a charity for Freemasons, for families, for everyone. For more information, please visit www.mcf.org.uk

Caring is our way of life

www.rmbi.org.uk [facebook.com/thermbi](https://www.facebook.com/thermbi) twitter.com/thermbi